

Another **FREE** ebook from

www.consult-iidc.com

AT-A-GLANCE
e-booklet
by ImPix Press



Brain-Mind And « Rainbow Gates »

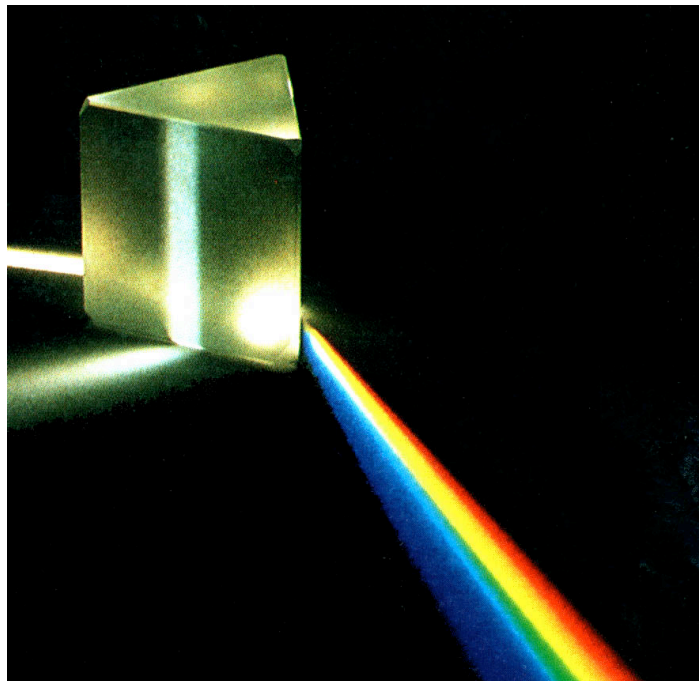
by Lawrence J-E. Poole

FREE E-booklet

The « Theophysics » series

-- AT-A-GLANCE SYNTHESSES --

BRAIN/MIND AND « RAINBOW GATES »



LAWRENCE J-E. POOLE ©

ABOUT THIS MONOGRAPH:

Leadership is more tribal than scientific. Gurus like Max Dupree and Peter Drucker say that Leadership has more to do with building relationships, cooperating and exploring creative ideas than managing businesses.

It is not often seen that way though, as competitive drive, egos and limits to perceptions get in the way. A mind that's built on the "compete to survive" paradigm for example, might not embrace the requirements of a perceptual model based on cooperation.

This is about how LEADERS make up their minds. As our paradigms are *neuro*-logical, they explain our thinking. Like a road map, this monograph will allow you to move away from a relatively reactive mindset, to the self-empowered "flow state" of being a creative and even a *magical* thinker. It does this by supplying a *springboard story* and signposts to guide the paradigm-shift.

Springboard stories allow readers to make a leap in understanding and grasp how an organization can change. The springboard story has its impact not only through transferring large amounts of information - but rather by catalyzing a specific realization. It enables listeners to visualize from the story told in one context, what is involved in a transformation of their own context.

Millennia ago, the seers and sorcerers of America uncovered the secrets of the human mind. *We are perceivers*. They saw how human perception has little to do with reaching pragmatic consensus about a real "out there" but more to do with persona and mood which "assemble" awareness. They saw that the perceiver is indivisible from his (or her) perceptions. So they explored HOW we perceive. The perceiver, they found, is linked to the perceived in a fundamental unit called a monad. They understood that by choosing our perceptions, we assemble the world.

Those Olmec sorcerers synthesized the fruit of their knowledge in a body of knowledge called « Teo physics ». It explains how "*We are the world...*" is more than a hit pop song. Having demystified perception, they turned their attention to understanding and respecting the laws in Nature. As you may be aware, Mesoamerica contains the greatest biodiversity on Earth; its ecosystems are a veritable university for scholars.

The self-knowledge gave them a powerful leadership development tool. The Olmec founded a culture of «Jaguar-kings» (and queens) who consciously ascended from this world - circa 600-400BC. Using « theophysics », they civilized the jungle, co-creating a free-trade empire along the way; the principles allowed them to imagine a democratic theocracy and a very prosperous *forest of kings* flourished for centuries as a result of it.

This booklet revives their SELF-knowledge. The "at-a-glance" syntheses can guide your paradigm-shift - from a focus on "out there", and its circumstances and events, to greater depth where you manage "in here", the thinker who is

“assembling” those circumstances and events.

THE TABLE OF CONTENTS

Introducing The Author	Page 5
8 Rainbow Gates Regulate Mood	Page 6
7 Glands Of The CNS (Central Nervous System)	Page 9
+ Subjective Consciousness = 8	Page 15
8 Levels Of Brain-Mind As Subjective Conjunctions	Page 17
8 Rainbow Gates	Page 20
Opening Your Floodgates	Page 28
<i>Learn more « Theophysics » ...</i>	Page 32

This FREE ebooklet is compiled from several sources, chief among them:

SELF-Empowerment, by Lawrence J-E. Poole

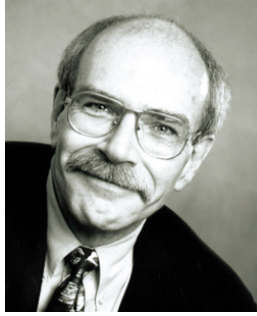
The Death Of Ignorance, by Frederic M. Bell, Ph.D.

The Glands Regulating Personality, by Louis Berman, M.D.

Transformations Of Leadership, by David Rooke and William R. Norbert

© ImPix – The Paperless Press

ABOUT LAWRENCE POOLE



Lawrence is – with little doubt – the only researcher on Earth who treks jungles... *in a wheelchair.*

More than 25 years ago, Lawrence had a tragic automobile accident in which he was paralyzed. After a long hospitalization, motivated by a drive to understand himself and what he'd been through – which included death and out-of-body experiences – he began an intuitive study of Nature, and has devoted himself to understanding the creative forces found there for more than 25 years.

His pursuits have led him to wilderness areas from Newfoundland to the Vancouver Island, from the tundra in Northern James Bay and the taiga and pine forests in Northern BC, to the jungles of Panama... *in his wheelchair.* His treks not only helped him rebuild his strength – he says they've given him years of joy while helping him discover his reason for being. The fruit of his labor is revealed in his book **"SELF-Empowerment (How and why to invest in your creative capital (IQ Press - ISBN: 2-922417-45-X).**

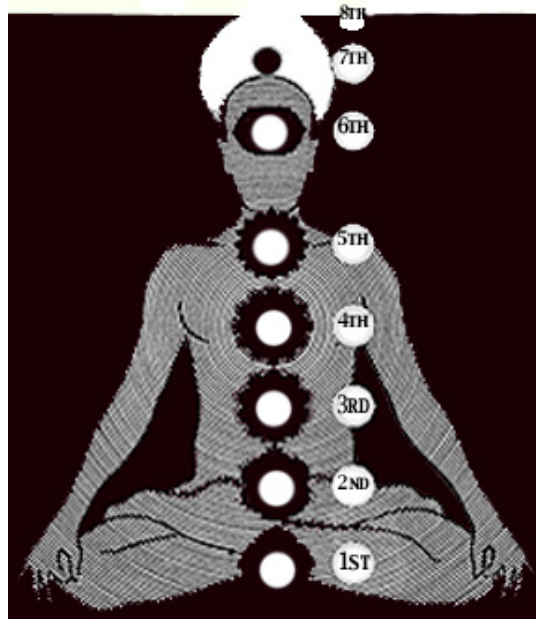
In 330 pages, he demystifies the principles of self-motivation, creative intelligence, strategy, innovation, passion and personal power. Lawrence also writes a monthly column called Lessons from the jungle.. in the Quebec business magazine "La Réussite" (Success) and he writes an online newsletter called "The Jungle Times".

Engaging readers with his compelling story and adding the latest science facts, Poole explains our creative potential with practical applications. His book is a very effective at-a-glance synthesis, loaded with powerful tools and exercises. It will stimulate you to empower your own life.

Lawrence animates « multimedia training events » that are highly motivating and empowering. He leads leadership and team-building programs based on Nature's primary management strategy: Altruistic self-interest. He is a pioneer developer of heuristic teaching tools. The word heurism comes from the Greek meaning self-discovery, and focuses on how people learn. He and his partners will lead you in a learning adventures in Costa Rica, in Québec or in your favorite place.

Visit him online at www.consult-iidc.com to subscribe to The Jungle Times.

8 «RAINBOW GATES » REGULATE MOOD (AND BEHAVIOUR)



The eight (8) rainbow gates that can "assemble" perception.

Called **CHAKRAS** in Eastern traditions, 7 of them are available within brain-mind, while the 8th links mind to a *creating* « Intent » that is outside of us.

The Eastern idea of "chakras" gets Western flavor from the ancient Olmec of Mexico and Central America. Their concept has to do with opening « *rainbow gates* » to become sorcerer-kings (empowered leaders). In their worldview, personal power comes from accessing the **Light of creation** directly..

The great Patriarchs of the Popol Vuh learned that universal energy and personal energy are the same energy. Modern science agrees. Universal energy interacts with a personal brain as consciousness and produces the subjective mind. Brain + consciousness = mind which is thereby linked to a quantum reality. Both Olmec science and daily politics were based on «Teo physics», the physics of the creative Light... of God.

Their worldview includes a unifying quantum – **this world is created from Intelligence which is organized as the (4) fundamental forces in Nature.**

Those mesoamerican sorcerers learned **how** the creating **Light** can be perceived in terms of its Amplitude, Magnitude and Frequency as it interacts with individual brains. They discovered *that* the physical world is indivisibly linked to conscious, subconscious, unconscious and Superconscious intelligence, and that anyone can access any or all of it.

The first Americans explored Light as it diffracts into our individual spheres of mind. An aura of Light surrounds every sentient being... The Ancients discovered that brain/mind is organized as a limited, closed-loop system, *even if it interacts with an infinite « Theophysical » universe.*

That's not good or bad, it just is.

Hereon, you'll find a series of syntheses that explain 8 levels (amplitudes) of organization. These will fill the gap separating matter and mind.

As you'll see in the next few pages, human perception can be assembled from eight (8) levels of awareness. From a physical density to a morphic subtlety, matter and mass are Spirit and can only be explained in terms of quantum magic. The rules of cognition explain that *the solution to a problem CANNOT exist at the same level of understanding as the problem*, and this multi-level an interdimensional view lets you strategically find solutions: After seeing at what level of organization a problems belong, look up the levels that assemble its ideal solution in this «at-a-glance» booklet.

Assembling information at subjectively higher levels of organization, (or paradigm-shifting) will allow you to see how the lower levels of mind are assembled. You can then opine the existence of a creative hierarchy. Relative humility might be required to conclude that there are higher levels of complexity and organization beyond where you normally assemble. Can you imagine your higher mind.

A universal equation of pure logic – the unified field formula –links physics, metaphysics and Theophysics to establish how the perceiver **must** shift levels of awareness to perceive the higher mind. The ascent in Spirit is accomplished through a series of energy transducers that Eastern esoteric traditions call *chakras* and the sorcerers say "*rainbow gates*". An ancient Sanskrit word, *chakras* describe a mechanism that converts energy from one form into another,

Understanding how to access your *chakras* – or your *rainbow gates* – will allow you to shift levels of perception into higher or lower organizations of mind, at will. When you pass through the 7th gate, you'll perceive with the MasterMind, or God's Mind.

Think of the *rainbow* as Light that is diffracted into separate levels of organization – color - by a crystal form. Your *rainbow gates* are "biological transducers" or master controls that modulate **how** your central nervous system processes your "consciousness" Your *rainbow gates* will allow you to assemble the diversity of our levels of thought into one "flow of consciousness" we call *our mind*.

The biological correspondences of the *rainbow gates* are found in the endocrine-immune systems and their effects are now studied by science. In the biological model, 7 glands attached to our spinal cord secrete hormones that select the neurotransmitters that fill the synapses in our brain. Those neurotransmitters link our thoughts and thereby produce our moods, minds and motivations.

Research shows that most people assemble their perceptions from the first 3 levels – i.e. the physical, emotional, intellectual levels that make up the core nucleus of a person. Higher achievers add the 4th chakra to their core, creating a larger subjective sphere of awareness, a spiritual level with a heart-felt “self-esteem center”.

Creative persons and mystics expand beyond that and reach mind-states that include psychic and spiritual powers called the “atmic” level. The atma is the apex or the supreme tip of the spiritual level of awareness. About 85% of people are largely unaware of the possibilities that exist just beyond their closed-looped and self-organized mindset – i.e. they don’t expand very much beyond the 3rd or 4th chakra.

People with spiritual depth experience the 4th chakra as a deeper reach of their intellect level, or as a higher intelligence. At the spiritual plane we add to the realizations of our physical-emotional- intellectual SELF, and recognize the existence of Spirit... energy. ALL is one energy. Now imagine your *sphere of awareness* as a bubble of energy that is radiating out from your body’s center.

In fact, your energy field I (or aura) is measurable as a circumference of about an arm’s length around you... More than just a physical body, you are also indivisibly (or quantum) inside of an energy “egg”.

This “aura” of psychic energy is a *morphic density* that contains all of your awareness, ready to be assembled into holograms as your mind.

As the 3rd chakra (yellow gate) manages the ego’s sphere of awareness, this 4th (green gate) transducer adds an egg-shaped spiritual SELF to the equation. The passage from ego’s intellect to SELF awareness expands your reach, giving you spiritual depth.

If you don’t perceive then you must “believe” (and then Spirit becomes religious fervor). That’s no longer necessary thanks to the Theophysics approach. With its logic, the alternative becomes: *If you don’t perceive expand your sphere of awareness by developing a strong connection to your chakras #5-8.* As the Olmec sorcerers suggested: *Access all your rainbow gates.*

Now as you try to imagine yourself with as a quasi-invisible aura which is a sort of egg-shaped sphere of Light surrounding you, imagine a vertical line from your egg-center dividing your noosphere into two hemispheres. One is concerned with the active side of energy (left) and the other is concerned with energy’s passive side (right).

Imagine a channel dividing your left and right sides, from the center of you rising up the center of your body out the top of your head to a point about 12 centimeters above you and then divide that channel into 8 equal parts. Mark them off as #1 (more or less your center at the base of your spine) and #8 as the headspace 12cm above you. Know that those 8 levels extend all around you as energy density or thickness. Imagine that they’re thick skins if you’re an

onion. We can deal with them as 8 levels or 8 floors if the channel that divides left and right is an elevator shaft.

You are a physical body inside a sphere of energy that's 8 levels thick. Like a goldfish in a bowl of water, we live inside of a subjective bowl of awareness – intelligence - from physical density at the center to subtlety at the edges... oblivious to how the sphere's content has a limiting effect on our perception.

Learning about your *rainbow gates* will open you to eight (8) levels of existence, and "whole worlds" that you can assemble:

- **The 1st level is the physical plane of awareness - *where we perceive form, matter and mass. This is the world of things.***
- **The 2nd level is the emotional plane – *where we perceive mass as energy-in-motion... Life. This is the world of biology.***
- **The 3rd level is the intellectual plane - *where e-motion assembles thought. This is the world of ideas.***
- **The 4th level is the spiritual plane - *where we can become aware of awareness... a morphic Spirit. This is the world of Light.***
- **The 5th level is the atmic plane – where the Light is SELF-organized as Intelligence that's indivisible from its creation.**
- **The 6th level is the monadic plane – where the creating Intelligence supplies evolutionary direction: This is the world as limitless oscillations of vibrating energy (i.e. - I.o.v.e.).**
- **The 7th level is the logoic plane *when we can willfully actualize God's I.o.v.e. This is the world, of « Oneness » and rules of unified field in Time-Space. It is the world of Magic***
- **The 8th level is the morphic plane - the domain of Superconscious quantum – or of God's mind. This is the world of superstrings of Light in physics, of dream in metaphysics, and of discarnate intelligence in theophysics.**

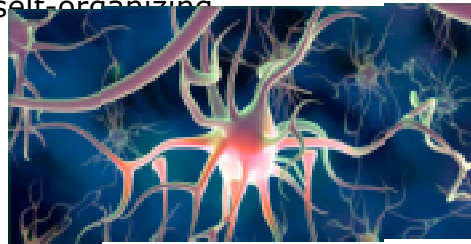
A universal *creating Intent* is surrounding each of us and is magically available as energy, force and power.

7 Glands of the Endocrine-Immune System

The chakras or transducers of energy correspond to the 7 glands of the endocrine/immune system. These regulate and define our mind by being responsible for our moods. Mind, of course, is the result of the interactions between a subjective brain and objective energy... consciousness.

To understand this, you have to understand that the base unit of the nervous system is a neuron.

Composing the brain and spinal cord, science is happy to inform us that we inherit 100 billion of them at birth. And rat might grow some 40,000 new ones just to learn how to run a new maze. It's interesting to know note that neurons link up at *Light* speed. The hologrammatic process of assembling "mind" from awareness in brain is self-organizing.



A neuron links conscious energy... into intelligence.

Like relay switches of a living information system, neurons direct the flow of *consciousness* as it moves through the brain, assembling its view of intelligence.

Linking complex patterns of ideas, it contains them, producing holograms of thought – mind - from engrams of memory.

The linking depends on the neuron's inner space, called a synapse. Depending what blend of chemicals – called neurotransmitters - fill the synapse, they connect these tentacles to those, or these to those, or other ones to these. And the hormones released at the chakras select the neurotransmitters. Your ideas come together attracted by their emotional glue... your mood.

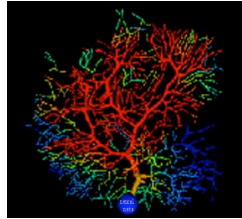
In simple terms, Nature organizes intelligence by assembling it from *emotional* charges. Responses like Fight or Flight, Tend and Befriend, and other human mechanisms are hardwired from use because they allow us to quickly trace pathways to those transmitters that shape our mind in survival mode.

The immune system is the body's first line of defense and it instantly triggers survival alerts. From that, mind sees a priority list of dangers and a hierarchy of need

So - the quality of your mind is brought to you by your moods. Endocrines are glands whose chemicals are expelled through their cellular body directly into the

bloodstream where they travel almost instantly all over the body and reach your brain.

The chakras are energy transducers in a very real sense as they determine how the neurons are assembled by directing consciousness up or down their selected neuropathways.



**How a neuron links into neural nets.
The ancient Americans suggested we can assemble the « Tree Of Life »**

Here's a very brief look at mental and psychic effects on your consciousness produced by your endocrine/immune system:

1. The Adrenals

The adrenal glands (dual) are situated on both sides of the abdomen, astride and in back of the kidneys. They are concerned with **Survival**, general growth, and the growth of brain cells. The adrenal cortex secretion is one source of the inner drive that produces maturity.

The adrenal glands - primarily - prepare us for combat. They produce that hormonal mix which immediately and actively responds to danger or anger, and their secretions make us erratic in times of emergency.

Pain, rage and fear have a definite effect upon the discharge from the adrenals, and we are told - *"All the evidence points to its medulla as the secretor of the substance which makes for the phenomena of fear, and to its cortex as dominant in the reactions of anger."* - Berman

With courageous reactions, consciousness is present. We know that deliberate courage involves more than survival instinct. There is an act of volition, a display of will. *"Admitting that without the adrenal cortex courage would be impossible, the chief credit for courage must be ascribed to the ante-pituitary. It is the proper conjunction of its secretion and that of the adrenal cortex that makes for true courage."* Berman

2. The Gonads

The gonads or *interstitial* glands are the sex glands. They have both external secretion and internal secretion. Their secretions are the medium for reproduction.

It is unnecessary to dwell at length upon the effects of the gonads on personality. The sex impulse and its various subsidiary effects, both physical and psychical, are well recognized and much studied, and even if we largely study perversions and inhibitions to understand normalcy and libido, sex studies have proved to

have paramount importance to our understanding of human beings. Some psychologists suggest that all human reactions - physical, emotional and mental - relate to sex and sex alone, and, without that extreme position, we know there's a substratum of truth there. Survival of the species means procreation. **Survive and prosper** is the attractive rule. Are you attractive enough to earn the right duplicate? Your self image will be defined by how you answer this for your SELF.

Emotion and perception determine who we are. The more elusive and intangible processes like the link between emotion and psyche are unaccounted for in the world of matter. To our perception, though, the sexual glands and their effect on the nervous system's development and functioning determines our range of contact and responses in the world.

A saint can be made into a sinner and the sinner into a saint by increasing or decreasing his hormonal secretions. Our hormonal mechanism is the sum total of who we are. *"We are no better, no worse, than the equipment with which we come into the world."* Berman

3. The Pancreas

Most of the information we have in connection with the pancreas is physiological, and, therefore, out of place here. Suffice it to say, though, that the pancreas is in the abdomen, close to the solar plexus and it is responsible for the core of our instinctual animal nature. The pancreas is closely concerned with "assembling energy" for our physical and mental purposes.

The pancreas is responsible for two secretions, both of them types of insulin. One is concerned with the digestive processes and the other is known to be vital to the metabolism of sugar. Sugar feeds the body-brain's cells, supplying them with metabolic energy.

It is interesting to note that while the brain only represents 2-3% of a body's mass of cells, it consumes more than 20% of its energy. Without sufficient sugar, no muscle works but first and foremost - *no brainwork*.

The pancreas determines **how** the essential decision in the struggle for existence will be answered. It is the framework by which our energy-in-motion (emotion) links ideas into action plans: **Survive and prosper as strategy**. Each distinct idea is contained in emotional engrams as *cells of thought*. Here emotion is the positive current that magnetically attracts ideas.

4. The Thymus

The thymus gland is one of the most mysterious of all. Like the pineal gland, it is a mainly active in childhood. Why it diminishes still baffle investigations but is believed to be behavioral. The thymus acts like a rheostat, transforming energy into higher or lower pulsations. In a mix of hormones it secretes with the pituitary, it floods brain/mind with the feeling of love. It's resonates to a super super-attractive force and is responsible for our resistance to infections.

The thymus gland is situated in the chest, covers the upper portion of the heart, and has a relationship to how we view nutrition and personal growth. It seems to be linked to the irresponsible nature of children and, when over-functioning in adults, produces an irresponsible man or woman, and amoral behavior. This because the attractive force also repels... allowing for conscious choice and decision, it lets us - **Survive, prosper and choose to be immortal.**

5. The Thyroid and the Parathyroid

Of the thyroids, more is known than of the pineal gland or the pituitary, and from the standpoint of Eastern wisdom, this is to be expected. This gland is found astride the neck, above the windpipe, close to the larynx. It is a very large gland, once thought a sex gland, it is sometimes called the "third ovary."

"In the lower vertebrates it is clearly connected with the ducts of the sexual organs, but in the march of evolution upwards that relationship is lost, the thyroid migrates more and more to the head region, to become the great link between sex and brain." - Berman, Louis, M.D.

We are told also that it is the great differentiation of tissues, and has anti-toxic power, preventing poisoning and increasing resistance to poison. Above everything else, the thyroid gland is the controller of metabolic energy. It's the lubricator and catalyst of energy in the body. It controls the rate of metabolic speed of living cells and is the master switch of the endocrine system.

It is indispensable to life. Without the thyroid there can be no complex thought or higher intelligence, no learning, no education, no habit, no immediate response energy, no physical reproduction of any kind, no adolescence burst at the expected age, and no exhibition of sexual tendencies thereafter.

We also know that our parathyroid is responsible for "sensitivity" - or our ability to discern between levels of sensation and perception. The thyroid, - like the pituitary - is connected to how we create, store and retrieve memory. **Survive and prosper as a creative synthesis.**

6. The Pituitary

The pituitary gland is really two glands in one. It is about the size of a pea and lies at the base of the brain a short distance behind the root of the nose. This gland has been called "nature's darling and is like a "brain within the brain".

As most of the glands do, in some form or other, it has a close relation to sex, but is also related to such periodic phenomena as sleep and dream. We know that it's the gland responsible for continued effort, energy consumption, and that it stimulates the brain cells. It has a direct and important effect on the making of the personality.

We are also informed that insufficient pituitary development causes, or at least accompanies, conspicuous moral and intellectual inferiority, and lack of self-control; but that with a good pituitary development there is a pronounced mental activity and vigor. It seems to have a very close connection with our emotional and mental qualities and our vision of the world.

The secretion of the post-pituitary is *pituitrin*. The post-pituitary governs the maternal, social and creative instincts... what's called the "tend and befriend" response. It said to energize the *tender* emotions...and allows the deeper states of love, joy and passion. For all the basic sentiments (as opposed to the intellectualized self-protective sentimentalism), tender-heartedness, sympathy and suggestibility are interlocked with its functions.

The secretion of the ante-pituitary is largely unknown. "*The ante-pituitary has been depicted as a gland of intellect... By intellect we mean the capacity of the mind to control its environment with concepts and abstract ideas.*" Berman

Mental activity is accompanied by increased function of the ante-pituitary, if intellectual, or of the post-pituitary, if emotional. It's apparent that the personality qualifies emotions. We might give metaphysical values to emotions like love of our fellows, or even our love of God – but these are largely dependent on the condition of our pituitary gland, as is also the ability to creative synthesize thought – or to see cause and effect relationships. **Survive and prosper as creative SELF-realization.**

7. The Pineal Gland

The pineal gland is cone-shaped, about the size of a pea, and is in the center of the brain in a tiny cave behind and above the pituitary gland. It lies near the roof of the nose, in the center of the brain. The pineal gland is attached to the brain's third ventricle. It contains a pigment similar to that in the retina of the eye, and are called "brain sand particles."

Numerous attempts have been made to determine what function, if any, the pineal has. It is indispensable to life as it plays a role important to a particular phase of metabolic activity – our conscious and unconsciousness states and how we relate to light.

It has been suggested that the gland regulates our relationship to creation and that it has a definite effect on our sexual nature. It is related to brain growth and its active function causes intellectual acuity and precocity.

The pineal gland has also been called the third eye or the eye of Cyclops. Until a few decades ago, scant attention was paid to it. Ancient philosophers thought the pineal was the seat of the soul, and Descartes is quoted as saying, "*In man, soul and body touch each other only at a single point, the pineal gland in the head.*"

In fact, it is related to the creative will, to uplifting your mind to actualize God's bidding. By resonating the mind to Light, it helps us develop the higher self. Unfortunately, unless personal growth is a lifelong pursuit, facts now establish the pineal as gland of childhood which atrophies later in life. Is there not then, some real connection to mood, mind and behavior: "*The Kingdom of Heaven is within you,*" and "*Except ye become as little children ye shall not enter into the Kingdom of Heaven.*" **Survive and prosper as creative SELF-actualization.**

CAN CONSCIOUSNESS BE KNOWN OBJECTIVELY?

Quantum theory describes the strange wave/particle duality of energy and matter at very small scales. In the quantum world body and mind are indivisible. Quantum behavior is so weird that American physicist Richard Feynman once commented "Anyone who claims to understand quantum theory is either lying or crazy."

Well, as strange as it is, quantum theory offers views that are relevant to proving subjective consciousness... objectively. One of these is the realization that large collections of quantum particle/waves can merge into unitary coherent states of macroscopic size and influence.

Superconductors and lasers demonstrate unitary states in which component atoms or molecules give up individual identity and behavior. Such coherent quantum states occur in brain proteins and thus provide unitary "monads" a sense of SELF by showing that biology and the energy of awareness are "one thing".

Another quantum view is "quantum superposition" which allows components of isolated small scale systems to exist in different states or locations simultaneously. This is contrary to our perceptions in the macroscopic world, where objects have well defined positions and are decidedly solid. In the monad, brain-mind is "one thing" whereas, in a classical observation, "I am aware" perceives him or herself as distinct from his or her brain.

The problem is the transition --- Why and how do microscopic quantum states become classical and definite in the macro-world? Then how does consciousness become brain?

This problem is called quantum state reduction, or collapse of the wave function, and it is the key to understanding both consciousness and how we perceive reality.

Experimental evidence in the early part of this century led theorists like Bohr, Heisenberg and Wigner to conclude (the "Copenhagen interpretation") that objects remain in wave-like quantum superposition states until observed by a conscious human being... i.e. by consciousness - which causes a collapse of the wave function!

In the 1930's, to illustrate the apparent absurdity of this conclusion, Schrodinger devised his famous experiment: A live cat is placed in a box into which poison can be released by a quantum event, e.g., sending a photon through a half-silvered mirror. After the photon has been sent there are equal possibilities that Schrodinger's cat is either dead or alive. But according to the Copenhagen interpretation until *a conscious being* opens the box to observe, the cat is both dead *and* alive. Schrodinger's point is that the conscious observer interpretation is incomplete. Observer, observation and observed are indivisibly one.

Many physicists now believe that an intermediate between tiny quantum scale systems and "large" cat-size systems exists and that an objective factor disturbs the superposition to cause its collapse. This idea is called "objective reduction (OR)." According to physicist Roger Penrose, this objective factor is an intrinsic feature of spacetime itself (part of quantum gravity).

As mass is equivalent to space-time curvature, Penrose opines that quantum superposition is an actual separation of mass from itself, equivalent to spacetime curvatures in opposite directions simultaneously causing "bubbles" or spheres in fundamental reality.

Penrose reasons that these spheres are unstable and reduce to specific states and locations after a critical degree of separation. As proto-conscious experience is rooted in the Planck scale, then objective reductions (aka - Whitehead's occasions of experience) ripple through an experiential medium.

Do OR events occur in brain-mind? Critical space/time separation in the Penrose's OR description is described in the uncertainty principle as $E=h/T$. E is the energy of the superimposed mass, h is Planck's constant over 2π , and T is the coherence time until reduction. The size (and energy) of a superposed system (degree of space/time separation) is inversely related to the time T until a "self" causes conscious-collapse.

If isolated, a large system (e.g. Schrodinger's one kilogram cat or human-scale events) will undergo OR very quickly, e.g. in only 10^{-37} seconds. A small system such as a single isolated superposed atom would undergo OR only after 10^7 years.

Brain-mind events are linked to neural processes with T in the range of tens to hundreds of milliseconds (e.g. 25 msec intervals in coherent 40 Hz). For T=25 msec (40 Hz) OR events, E corresponds to roughly 3 nanograms (3×10^{-9} gram) of superposed brain mass.

Subjective consciousness is, then, while fleeting, indivisible from objective and universal energy/mass.

**Stuart Hamerof, PhD,
and Roger Penrose, PhD**

8 LEVELS IN BRAIN/MIND AS SUBJECTIVE CONJUNCTIONS



"Without 'Spirit' ...the brain is just dead meat!"

Consciousness (an objective force) is assembling your "mind" as it interacts with your personal brain in subjective perception. This is universal... there are no exceptions.

The brain-mind (spirit) state provoked by being self-aware can be used to expand your sphere of awareness. The expansion is explained in terms of magnitudes, amplitudes and frequencies of "Light".

Magnitudes describe intensities of light. In the first magnitude you are self-aware. In the next magnitude, you are aware of awareness – i.e. there is an objective consciousness. In magnitude 3, subjective consciousness is disciplined into «will».

If the exploration of "will" is all encompassing, subjective will can reach universal WILL, and recognize it as I.o.v.e. – magnitude 4 – the limitless oscillations of vibrating energy that are assembled as subjective perception. Next is the MasterMind frequency wherein unconditional I.o.v.e. (as energy-in-motion) is a pre-determined Intent. Then we can see how superstrings of Light are weaving the tapestry of Life in answer to Magnitude 5.

Here are the 8 amplitudes of creating Intent: **From our amphibian/reptilian bio-beginnings to our Angelic potential:**

1. The amphibian/reptilian brain circuits: the physical level of consciousness

- * the survival circuits from twin serpents DNA
- * personal genetic baggage
- * good/bad imprinting
- * health/sickness
- * territorial "I" (my world, me, mine)
- * wellness/stress
- * reflex-circuit and reactive programs

2. The mammalian/limbic brain circuits: the emotional/astral level of consciousness

- * the sexual/emotional circuits
- * conformism/ostracism
- * pleasure/taboo
- * confidence/fear
- * conditioned ethics and social values
- * domination/submission
- * personal memory: i.e., "morpheme" and "engram" programs

3. The hominid brain circuits: the mental/intellectual level of consciousness

- * the semantic/social circuits
- * known/unknown
- * conditional hierarchies
- * reasoned choice
- * tools and management
- * modality of time
- * lead/follow and "meme" programs

4. The neo-cortex, human brain/mind: the spiritual level of consciousness

- * the moral/philosophical circuits
- * "in-here" and "out-there" duality
- * becoming aware of « awareness »
- * joy, inner peace, satisfaction
- * heroes, archetypes and icons (gods/goddesses/demons/UFOs)
- * access to wisdom and utopian potential
- * personal growth programs

5. Harmony between brain hemispheres: the atomic level of mind

- * holistic circuitry: the ascending SOUL beyond the personal brain
- * synthesis/integration "I am-ness"
- * self, passion and empowerment
- * global prosperity paradigm
- * gaining trans//personal power
- * self-healing and wellness
- * "future" programs... for love, devotion, surrender

6. Resonance with an evolutionary direction: the monadic level of consciousness

- * self-awareness: i.e. understanding oneself as having a causal nature
- * consciousness expansion and interdependency
- * marrying contradictions / taking responsibility
- * modifying subjective behavior
- * reason for being (the ultimate why?)
- * "process vs result" orientation
- * meta-de/reprogramming

7. Fusion with Creating "Intent": the logoic level (as true will or magic)

- * vibratory access to molecular DNA (Hieronymus Effect)
- * universal connectivity in Time-Space-Consciousness (synchronicity and creative *capital*)
- * hologrammatic noospheres on a Biosphere
- * connecting with the Superconscious INTELLIGENCE in Nature
- * actualizing the law of "ONE"
- * immortality/eternity
- * " self " actualization and network CUBE

8. Morphic fields of consciousness: the level of unbound DREAM = LIGHT

- * form/formlessness
 - o no thingness and ALLness
 - o GODHEAD – NIRVANA – HUNAB KU
- * inter legentia and « Creating Spirit »
- * black-hole, timelessness, hyperspace
- * infinity and rapture
- * "non-local quantum" realities
- * here/now "awake" and potential

Of course - if you take responsibility for your own brain/mind and reprogram by ascending directly into the Creating Spirit, you're on your way to being creative.

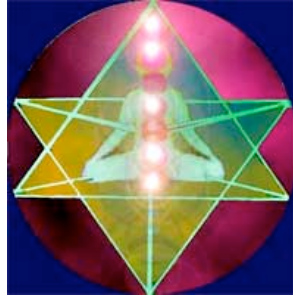
When you consider the alternative - i.e. continuing to be limited by the past, by the tribe, by events or by circumstances outside of you own doing - then the prospect of investing in your creative SELF makes plenty of sense.

« Rainbow gate-crashers » should be aware that the Earth is managed with a self-destructive system. The faster the interaction between consciousness and brain, the more reactive the personality. Measurable on an EEG, changing our brainwave frequencies, allows us to change our relationship with the MasterMind.

There are super-speed **GAMMA** brainwave which totally focus the perceiver on "out there" and its chaos, but to access "normal awareness" with its wide band of brainwave states, we'll be inside the BETA frequencies, from 40-14 hertz.

We'll be "aware of awareness" in the meditative ALPHA brainwaves, from 14-8 hertz frequency. Here we can see "consciousness" as discarnate intelligence. Vision, dreaming and interacting with the discarnate intelligence occurs in the THETA brainwave frequencies, between 8-4 hertz. Lucid dreaming, "oneness with will", connecting with higher mind (I.o.v.e.) and such occurs in the DELTA brainwave states, and accessing pure Light – God – waits at the Ømega point... Stop time, flatline and expand your mind into cosmos.

THE 8 RAINBOW GATES



Christal perception where 2 tetrahedrons = 1 cube
« Paradise » here/now as mirror fusion of "I" and "not-I".

1 - THE PHYSICAL PLANE OF AWARENESS

<u>Gate Color & Function:</u>	Red -Survival of the body via awakening primal fire: Life force, soul or <i>kundalini</i>); [P - O = V]
<u>Dominant force:</u>	Purpose -> Will
<u>Leadership drive:</u>	The Opportunist = <i>Win in any way possible</i> ; Self-oriented manipulative; « might makes right. »
<u>Negative polarity:</u>	Unconsciousness; survival-mode fear reactions; Destruction seen as necessary to recreation; health crisis or dis/ease; psychosis or depression.
<u>Link to Morphic field:</u>	White: Awaken "Creative Intent" - Catharsis
<u>Crystal lattice:</u>	Tetrahedron; Trigonal connectivity, ex. Cornelian.
<u>Vibratory resonance:</u>	C
<u>Endocrine/immune:</u>	Via adrenals
<u>Organic systems:</u>	Parasympathetic system; spinal cord. connective tissue; gall bladder; muscles.
<u>Affirmation/alignment:</u>	I AM filled with vital energy, and my energy is centered, grounded and firmly connected to Earth Mother.

I accept my birthright to a healthy, balanced relationship with my body... and that of Creation.

I use my life force – my will - to fill my needs with abundance. I claim sacred power by awakening my link to the creating Intent of universe.

I AM A PHYSICAL PRESENCE... CREATED AS AN INSTRUMENT OF GOD.

2 - THE EMOTIONAL OR ASTRAL PLANE OF AWARENESS

<u>Gate Color & Function:</u>	Orange -Transformation of vital energy into procreative and co-creative force via sexual function; the body thus generates emotion; $e = mc^2$ ($e = hf$ and thereby limitless oscillations of vibrating energy... i.e. - l.o.v.e.) as an attractive force;
<u>Dominant force:</u>	Concrete evolutionary knowledge -> Truth
<u>Leadership drive:</u>	The Diplomat - <i>Avoids overt conflict</i> . Wants to belong; obeys group norms; rarely rocks the boat. Good as supportive glue within a team; helps bring people together.
<u>Negative polarity:</u>	Fear; misuse of sexual energy, lust; selfish <i>love</i> or ego-centric pettiness; shyness; defensive, racist, sexist, homophobic attitudes; paranoia; neurotic or psychotic disorders.
<u>Link to Morphic field:</u>	Violet: Invocation, transformation, liberation; ritual sex magic or total abstinence.
<u>Crystal lattice:</u>	Christal connection; Cubic valence bond, ex. Garnet.
<u>Vibratory resonance:</u>	D
<u>Endocrine/immune:</u>	Via gonads, ovaries, testicles, prostate gland.
<u>Organic systems:</u>	Sympathetic; Reproductive; kidneys; bladder.
<u>Affirmation/alignment:</u>	I AM an emotional being with assertive (male/yang) and receptive (female/yin) aspects to my persona.

I participate in the evolutionary dance of creation by harmonizing my Yang and Yin polarities.

I AM one with my sexuality, not requiring fulfillment outside of my capacity to love.

I AM HARMONIC DESIRE, TRANSFORMING PRIMAL ENERGY – PUTTING IT IN MOTION AS LOVE.

3 - THE MENTAL/INTELLECTUAL PLANE OF AWARENESS

<u>Gate Color & Function:</u>	Yellow -Balances intellect where emotional energy becomes ego (electric) and self (magnetic); reduces the world to an inner dialogue (left/right brain) to assemble mind; (+1) + (-1) = 0
<u>Dominant force:</u>	Devotion -> Idealism
<u>Leadership drive:</u>	The Expert - <i>Rules by logic and expertise</i> . Seeks rational efficiency. Good as an individual contributor.
<u>Negative polarity:</u>	Anger, hatred or rage; egotism; fear of success or failure; judgment and criticism; greed and avarice; revenge or spiteful attitude.
<u>Link to Morphic field:</u>	Ruby, violet, gold -Inner peace; serving a humanitarian cause; protective love of Nature and Earth husbandry; empathy, help the weak.
<u>Crystal lattice:</u>	Octahedron and "As above, so below" grids; Pyramid power from hexagonal valence bonds, ex. Emerald.
<u>Vibratory resonance:</u>	E
<u>Endocrine/immune:</u>	Via pancreas and solar plexus.
<u>Organic systems:</u>	Respiratory system / lungs; spleen; liver; skin.
<u>Affirmation/alignment:</u>	I AM at peace with myself. I love and so I radiate creative intelligence - from my mind, into the world that around me.

I embrace all my thoughts so that they are energized in the love of the Creator and His healing elements.

I AM AN INSTRUMENT OF CREATOR'S INTELLIGENCE AND I CHOOSE TO BALANCE MY MIND, MY HEART AND MY ACTIONS TO REFLECT HIS CREATIVE INTENT.

4 - THE SPIRITUAL/ATOMIC PLANE OF AWARENESS

<u>Gate Color & Function:</u>	Green -Gives expression personal power and the "reason for being" via a Yin-qualified physical, emotional and intellectual ascension; experiences growth as unconditional love; [1+2 =3->4].
<u>Dominant force:</u>	Love -> Wisdom
<u>Leadership drive:</u>	The Achiever - <i>Meets strategic goals</i> . Well suited to managerial roles; effectively works with teams; action and goal oriented.
<u>Negative polarity:</u>	Attachment to personal beliefs; self-importance; jealousy; envy; bi-polar swings; chronic sadness or dissatisfaction.
<u>Link to Morphic field:</u>	Pink -Unconditional love of life and all Creation; compassion; mercy and forgiveness; acceptance and trust of inner resources.
<u>Crystal lattice:</u>	Tetragonal valence bond, ex. zircon or diamond. From the command center in a dodecahedron.
<u>Vibratory resonance:</u>	F
<u>Endocrine/immune:</u>	Via thymus gland.
<u>Organic systems:</u>	Cardiovascular, lymph, autonomous systems.
<u>Affirmation/alignment:</u>	I AM unconditional love.

I have compassion for all of humanity.

I AM on Earth to learn, serve and evolve.

I master the forces of illusion as I master myself.

I CLAIM MY IMMORTAL BEINGNESS.

I AM AN INTENSITY OF CREATIVE LIGHT AND I CAN EXPAND MY AWARENESS.

5 - THE ATMIC/QUANTUM OR CREATIVE PLANE OF AWARENESS

<u>Gate Color & Function:</u>	Sky blue – Self as soul ; global thought; synthesis; creative integration; Gaia vision; intuition; joy & self-knowledge from [$e = mc^3$].
<u>Dominant force:</u>	Active -> Creative Intelligence
<u>Leadership drive:</u>	The Individualist - <i>Interweaves competing personal and company action logics</i> . Creates structures to resolve gaps between strategy and performance. Effective in consulting roles.
<u>Negative polarity:</u>	Manipulation, lies or calumny; self-important "Christ complex" or atheism; fear of change or resistance to evolutionary path; fascist need for authority.
<u>Link to Morphic field:</u>	Electric, cobalt or royal blue – Grounding of Will in service; give form to the Divine; develop creative abilities.
<u>Crystal lattice:</u>	Icosahedron. Orthorhombic valence bond, ex topaz
<u>Vibratory resonance:</u>	G
<u>Endocrine/immune:</u>	Via thyroid and parathyroid gland
<u>Organic systems:</u>	Gastro-intestinal; bronchi; voice box, tonsils;
<u>Affirmation/alignment:</u>	I AM expressing my full potency on the Global stage.

I communicate my ideas freely because I perceive the Divine in Its manifestations as ALL created forms.

I affirm the power of my own I AMness to enter "Heaven on Earth" here/now.

I AM JOY, MASTERY AND VICTORY OVER MY LIMITING HABITS.

6 - THE MONADIC OR EVOLUTIONARY PLANE OF AWARENESS

<u>Gate Color & Function:</u>	Indigo -Direction; determination; wisdom via integration of experiences; inner/outer alignment; "Seeing"; [2 = 00].
<u>Dominant force:</u>	Conflict -> Harmony
<u>Leadership drive:</u>	The Strategist - <i>Generates organizational and personal transformations.</i> Exercises the mutual powers of vigilance and vulnerability, for both short and long term. Effective as a transformational leader.
<u>Negative polarity:</u>	Personal abuse (being above the rule); delusion; misuse of psychic force, i.e. false perception, interpretation, prediction or projection; indulgence; procrastination; lack of direction – easily deluded or lost in fantasy.
<u>Link to Morphic field:</u>	Emerald green -Self-healing; sorcery; visionary focus; "process orientation"; radionics.
<u>Crystal lattice:</u>	Mega-orbs. Monoclinic valence bond, ex. Malachite.
<u>Vibratory resonance:</u>	A
<u>Endocrine/immune:</u>	Via pituitary gland
<u>Organic systems:</u>	Visual and aural networks; sinuses.
<u>Affirmation/alignment:</u>	I AM actualizing the perfect sacred vision conceived in the original moment of Creation.

I journey to the stillness at the centre of my being in order to project the Divine presence into every atom, molecule and cell of Creation.

I AM AN INSTRUMENT OF TRANSFORMATION IN THE MASTER-MIND'S PERFECT PLAN.

7 - THE LOGOÏC/UNIVERSAL OR MAGICAL PLANE OF AWARENESS

<u>Gate Color & Function:</u>	Violet – Fusion and the law of "ONE". L.o.v.e is contained as the sacred forces; we assemble reality from 7 levels (or planes) of <i>Consciousness</i> via resonance to brain/mind frequencies (Gamma/Ømega states); Conscious ascent by stopping time - [11.11] is "Magic".
<u>Dominant force:</u>	Ørder -> Personal power.
<u>Leadership drive:</u>	The Sorcerer, Alchemist or Magus - <i>Generates social transformations</i> . Integrates material, spiritual, and social worlds. Good at leading society-wide transformations.
<u>Negative polarity:</u>	None
<u>Link to Morphic field:</u>	Amber - Self-actualization; lucid dreaming; willed union via ascension to joy, illumination => Rapture.
<u>Crystal lattice:</u>	<i>Spirit as forces:</i> Triclinic valence bond, ex. rodonite.
<u>Vibratory resonance:</u>	B
<u>Endocrine/immune:</u>	Via pineal gland.
<u>Organic systems:</u>	Central Nervous System.
<u>Affirmation/alignment:</u>	I AM wisdom in action.

I offer my understanding of Creative law by integrating unconditional love and boundless joy.

I AM a discerning presence of the ONE, always choosing the greater good in altruistic self-interest.

I AM A RADIATING SPIRIT – AN EXAMPLE OF CREATIVE ENLIGHTENMENT NOW MANIFEST IN THE WORLD.

8- THE MORPHIC (OR DREAM-STATE) REALM OF AWARENESS

<u>Gate Color & Function:</u>	BEYOND THE VISIBLE SPECTRUM IN <i>THE 5th DIMENSION</i> , PURE LIGHT AS FUSION FORCE. Mind connects to ALL via <i>consciousness</i> . A CREATING INTENT organizes discarnate intelligence into each separate thing. MasterMind is "another dimension" – a formless whole Omnipresence in Time/Space. Awareness as the objective whole, the infinite universe. ∞.
<u>Dominant force:</u>	«Big Bang» force from the power of Silence.
<u>Leadership drive:</u>	Seeking daily <i>omens</i> from a creating Spirit.
<u>Crystal lattice:</u>	Penrose quasi-crystals.
<u>Vibratory connection:</u>	Unified field; multi-dimensional interpenetration. Superstrings of I.o.v.e. as +/- ANUs
<u>Affirmation/alignment:</u>	I AM NO-THINGNESS AND THEREFORE AN INFINITE AND UNIFIED POTENTIAL...

I AM HERE/NOW AWAKE IN GOD'S MIND.

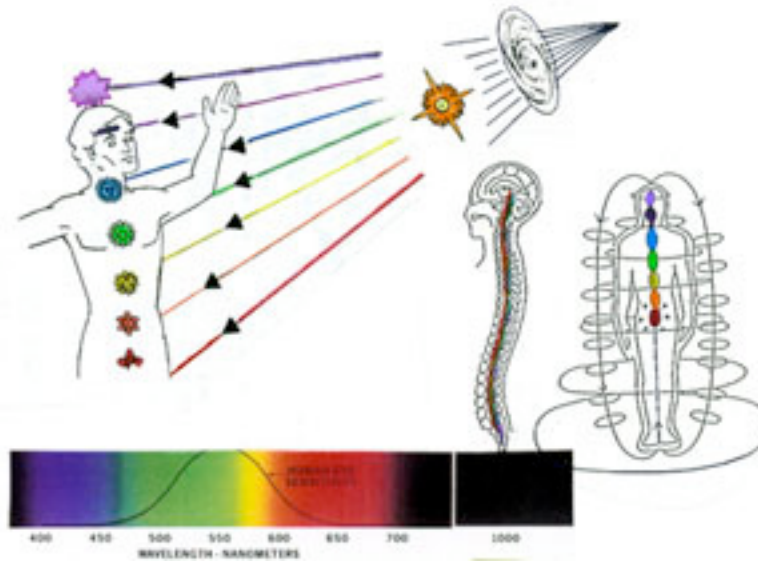
His universal formula for accessing and using SPIRIT is:

Energy contained = Force

Force focused = Power

Power – Obstruction = Vitality

OPENING YOUR FLOODGATES



Raising your « Inner-fire »

Introduction:

Everything is energy - including you and I. We are universal energy ($e=mc^2$; $e = hf$ and I.o.v.e. (as limitless oscillations of vibrating energy) contained in fundamental forces, and then assembled into form. (See my FREE monograph entitled "The Rules Of Spirit").

The human form includes a *sphere of consciousness* – a human aura of morphic density - that radiates... *from center to circumference*.

The biological body is molecular... and atomic energy but, even if unseen, the energy extends around living bodies to a circumference about an arm's length. We are more properly - a physical form inside a metaphysical egg. Your egg has a center (about midway between your pubis and belly-button at the spine) and a circumference that surrounds you.

The center of your body +/- corresponds with the 1st chakra at the base of the spine and its circumference is the 8th chakra about 6-8 inches above the top of your head. The chakras signal the endocrine-immune system to release hormones into the bloodstream; these reach the brain and select the neurotransmitters that fill the synapses in the neurons that assemble thought.

Creative energy concentrated in the center of the spinal cord (called the shushuma) can be directed to rise vertically up the spine into the brain, to spiritually "charge-up" the nervous system and empower the mind. Think of a dimmer switch that increases the light in a room - and then realize that you can increase your *power* by raising "your inner fire" in a dynamic way.

The exercises to raise the inner fire are known as Kundalini yoga in the East, or its called *Waking the Soul* or *Finding your True Will* in the West, or communing with the Manitou or the Great Sprit or Hunab Ku or God.

Lately, some call it "drinking from the Sacred Fountain", or "performing a vertical zip", or "ascending into rapture", or "fusing into Godhead" - or other names depending on the tradition.

Method:

Raising your fire begins with 7 deep and rapid breaths (inhalation from the nose/ exhalation from the mouth) followed by an 8th. - a deep inhalation that is held for a moment before being released as a vocal exhalation, mentally as an image and willfully as directed to a chakra.

The quick breaths are similar to the yoga technique called "inverse pranayama". From Sanskrit, *prana* refers the energy contained by the "air" that we breathe; *yama* refers to transforming that energy with the mental power of *concentration*.

Pranayama is deep breathing in which we fill our mind with the volume, force, texture and vitality of the air you inhale and exhale. Inverse pranayama involves consciously breathing to fill the center of the body, and expand outwards and upwards as you fill your lungs.

Practice each separate step in the technique to familiarize yourself with them and then examine the whole. If you are not used to it, breathing deeply it might make you dizzy - so proceed slowly and cautiously. As you should be standing straight, hold onto the back of a chair to steady yourself the first few times you do this.

Breath in from your nose, dynamically bringing a steady stream of air directly into the bottom of your stomach. As *prana* enters your body, contract your diaphragm (suck in your gut) and lift your thoracic cage. As you fill your lungs, expand you chest to overflow. When completely filled, exhale the air from your mouth, completely relaxing from your head, neck and shoulders down, allowing your stomach to release outward.

A somewhat complex technique, it involves 7 deep inhalation-exhalations cycles at each of 7 chakras, while concentrating your mind energy and directing it.

At the end of each 7-breath cycle, take the 8th deep inhalation and visualize your exhalation as you "intone" your exhalation and slowly directed the vibration to a "chakra". Toning your breath means making a noise while you exhale.

Raise Your Inner Fire

Stand up straight with your feet spaced shoulder width apart and your arms and hands down by your sides. (Hold onto the back of a chair until you develop sufficient balance.)

- **1st Chakra** - 7 quick, deep and dynamic inverse pranayama inhalation/exhalations. - Hold in the 7th. Inhale for an instant while you visualize the base of your spine (the Hara - midway between your navel and pubic line), seeing it as a ball of *red fire*. Exhale slowly, intoning the sound **LAM** and direct it to your center, seeing it energizing you and becoming an intense radiation.
- * **2nd Chakra** - 7 quick, deep and dynamic inverse pranayama inhalation/exhalations. - Hold in the 7th. Inhale for an instant while you visualize the zone about your genitals, feeling heat as if a liquid *orange* light. Exhale slowly, intoning **VAM** and directing it as energy that's felt as sexual warmth.
- * **3rd Chakra** - 7 quick, deep and dynamic inverse pranayama inhalation/exhalations. - Hold in the 7th. Inhale for an instant while you visualize your « solar plexus » as a bright *yellow* ball - like the sun. Exhale slowly intoning **RAM**, aligning the inner energy so it opens onto the outer sunlight.
- * **4th Chakra** - 7 quick, deep and dynamic inverse pranayama inhalation/exhalations. - Hold in the 7th. Inhale for an instant while you visualize an emerald *green* light entering your heart area. Exhale slowly, intoning **YAM** as you see a large halo of green light and slowly raise your arms above your head;
- **5th Chakra** - 7 quick, deep and dynamic inverse pranayama inhalation/exhalations. - Hold in the 7th. Inhale for an instant while you visualize sky *blue* about your throat. Exhale slowly intoning **HAM** and see your will connect with "out there".
- * **6th Chakra** - 7 quick, deep and dynamic inverse pranayama inhalation/exhalations. - Hold in the 7th. Inhale for an instant while you visualize a single point directly between and above your two eyes. Exhale slowly, intoning the universal sound **AUM** and feel all the creative power of that sound vibrate through you at you.
- **7th Chakra** - 7 quick, deep and dynamic inverse pranayama inhalation/exhalations. - Hold in the 7th. Inhale for an instant while you feel a pressure at the top of your head. For a moment's silence, connect with a white Light that builds at the top of your head. Let it flood your mind.
- Then exhale and shout **INTENT** into the **8th Chakra**, to empower the silence with an abstract view of what you'd like from the day.

After the exercise, take the time to let your body integrate the energy-boost. As if fishing, Light's monofilament can lead you to connect your creative will with the object of your INTENT. Open your eyes with the intent of spreading God's peace, power and healing warmth within and without your field of awareness, and then let that creative Spirit lead.

Build up an energy-reservoir and, whenever you need power, breathe deeply and draw creative energy up from your universal center, directing it into your *rainbow gates to where it'll* do the most good.

Get physical vitality from the 1st gate.

Get emotional authority from the 2nd gate.

Get intellectual acuity from the 3rd gate.

Get spiritual depth from the 4th gate.

Get creative by claiming joy at the 5th gate.

Get your evolutionary direction from the 6th gate.

Get SELF-empowered at the 7th gate.

Get Magic by ascending into the 8th gate

Practice so that you accumulate sufficient energy to ascend out the top of your head, through the 8th gate, into Starship Rapture, **BEFORE you die.**

It'll give you an alternative when that fated moment *finally* does come

How can I learn more?



- **READ MY BOOK: SELF-Empowerment – How and why to invest in your creative capital (I SBN: 2-922417-45-X)**
- **VISIT OUR WEB SITE'S CREATION SCIENCE PAGES**
- **SUBSCRIBE TO OUR FREE NEWSLETTER**
- **ORDER A « MULTIMEDIA » CONFERENCE**
- **HIRE US FOR A TRAINING EVENT**
- **ENJOY AN ADVENTURE IN COSTA RICA**
- **ASK ABOUT OUR STIMULATING PROGRAMS**

Visit <http://www.consult-iidc.com/book/whatabout.htm> for excerpts and then **ORDER A SIGNED COPY - or get it from** <http://www.amazon.com>

DOWNLOAD THE « 12 THEOPHYSICS SYNTHESIS » FREE FROM:

<http://www.consult-iidc.com/english/science/theophysicsprinciples.htm>

DOWNLOAD FREE « SELF-EMPOWERMENT TOOLS » FROM:

<http://www.consult-iidc.com/english/training/tool.htm>

DOWNLOAD OUR « TRAINING BROCHURES FROM:

<http://www.consult-iidc.com/english/science/enterscience.htm>

CALL OR WRITE FOR A CONSULTATION:

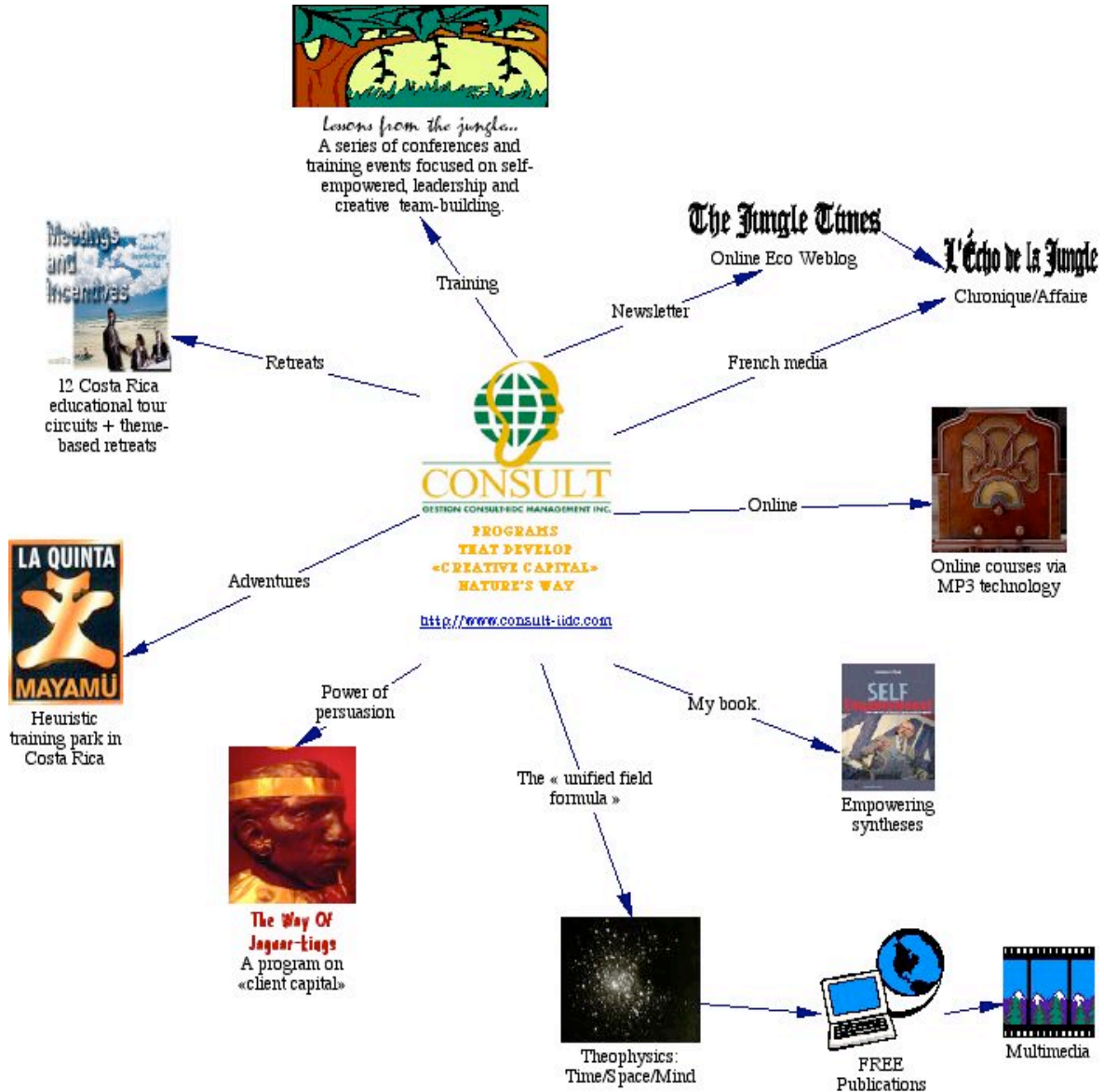
Lawrence Poole

**In Montreal, QC, Canada - Tel: (514) 481-2835 – Fax: (514) 481-2835
In San Isidro, PZ, Costa Rica - Tel: (506) 771-7482 – Fax: (506) 771-3667**

email: info@consult-iidc.com

HERE'S WHAT WE DO -

SO PLEASE SPREAD THE NEWS:



WANT TO HELP?

Write us: info@consult-iidc.com